

# ROMAN NUMERALS



**GET READY**



- 1) Partition 72 into tens and ones.
- 2) What is 10 less than 50?
- 3) Subtract 10 from one hundred.

1) Partition 72 into tens and ones.

$$72 = 70 + 2$$

2) What is 10 less than 50? 40

3) Subtract 10 from one hundred. 90

LET'S LEARN





Henry VII



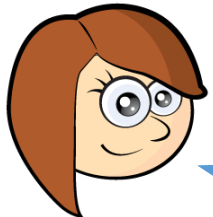
Henry VIII



Edward VI



Mary I



We're learning about the monarchs in Tudor times.  
The numbers look a bit different to how we say them.

Roman Numerals are written with a combination of symbols.

$$I = 1$$

$$V = 5$$

$$X = 10$$

$$L = 50$$

$$C = 100$$

A When a smaller symbol is written after a larger one, it is added.  
When a smaller symbol is written before a larger one, it is subtracted.

|   |    |     |    |   |    |     |      |    |   |
|---|----|-----|----|---|----|-----|------|----|---|
| I | II | III | IV | V | VI | VII | VIII | IX | X |
|---|----|-----|----|---|----|-----|------|----|---|

|    |     |      |     |    |     |      |       |     |    |
|----|-----|------|-----|----|-----|------|-------|-----|----|
| XI | XII | XIII | XIV | XV | XVI | XVII | XVIII | XIX | XX |
|----|-----|------|-----|----|-----|------|-------|-----|----|

$$I = 1$$

$$V = 5$$

$$X = 10$$

$$L = 50$$

$$C = 100$$



Henry 7



Henry 8

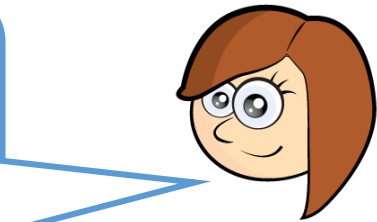


Edward 6



Mary 1

So Henry VIII is Henry the 8<sup>th</sup>!  
He's the one who had 6 wives. That's  
VI in Roman Numerals!



|    |    |    |    |    |    |    |    |    |     |
|----|----|----|----|----|----|----|----|----|-----|
| 1  | 2  | 3  | 4  | 5  | 6  | 7  | 8  | 9  | 10  |
| 11 | 12 | 13 | 14 | 15 | 16 | 17 | 18 | 19 | 20  |
| 21 | 22 | 23 | 24 | 25 | 26 | 27 | 28 | 29 | 30  |
| 31 | 32 | 33 | 34 | 35 | 36 | 37 | 38 | 39 | 40  |
| 41 | 42 | 43 | 44 | 45 | 46 | 47 | 48 | 49 | 50  |
| 51 | 52 | 53 | 54 | 55 | 56 | 57 | 58 | 59 | 60  |
| 61 | 62 | 63 | 64 | 65 | 66 | 67 | 68 | 69 | 70  |
| 71 | 72 | 73 | 74 | 75 | 76 | 77 | 78 | 79 | 80  |
| 81 | 82 | 83 | 84 | 85 | 86 | 87 | 88 | 89 | 90  |
| 91 | 92 | 93 | 94 | 95 | 96 | 97 | 98 | 99 | 100 |

$$26 = \text{XXVI}$$

$$46 = \text{XLVI}$$

$$49 = \text{XLIX}$$

$$99 = \text{XCIX}$$

**YOUR TURN**

Have a go at questions  
1 – 6 on the worksheet



|       |        |         |        |       |        |         |          |        |      |
|-------|--------|---------|--------|-------|--------|---------|----------|--------|------|
| I     | II     | III     | IV     | V     | VI     | VII     | VIII     | IX     | X    |
| XI    | XII    | XIII    | XIV    | XV    | XVI    | XVII    | XVIII    | XIX    | XX   |
| XXI   | XXII   | XXIII   | XXIV   | XXV   | XXVI   | XXVII   | XXVIII   | XXIX   | XXX  |
| XXXI  | XXXII  | XXXIII  | XXXIV  | XXXV  | XXXVI  | XXXVII  | XXXVIII  | XXXIX  | XL   |
| XLI   | XLII   | XLIII   | XLIV   | XLV   | XLVI   | XLVII   | XLVIII   | XLIX   | L    |
| LI    | LII    | LIII    | LIV    | LV    | LVI    | LVII    | LVIII    | LIX    | LX   |
| LXI   | LXII   | LXIII   | LXIV   | LXV   | LXVI   | LXVII   | LXVIII   | LXIX   | LXX  |
| LXXI  | LXXII  | LXXIII  | LXXIV  | LXXV  | LXXVI  | LXXVII  | LXXVIII  | LXXIX  | LXXX |
| LXXXI | LXXXII | LXXXIII | LXXXIV | LXXXV | LXXXVI | LXXXVII | LXXXVIII | LXXXIX | XC   |
| XCI   | XCII   | XCIII   | XCIV   | XCV   | XCVI   | XCVII   | XCVIII   | XCIX   | C    |

**YOUR TURN**

Have a go at the rest of  
the worksheet

