

EFFICIENT SUBTRACTION



GET READY



$$1) \quad 105 - \underline{\quad} = 100$$

$$2) \quad 105 - \underline{\quad} = 99$$

$$3) \quad 2,002 - \underline{\quad\quad\quad} = 1,999$$

4) Find the difference between 300 and 700

$$1) \quad 105 - \underline{5} = 100$$

$$2) \quad 105 - \underline{6} = 99$$

$$3) \quad 2,002 - \underline{3} = 1,999$$

4) Find the difference between 300 and 700

400

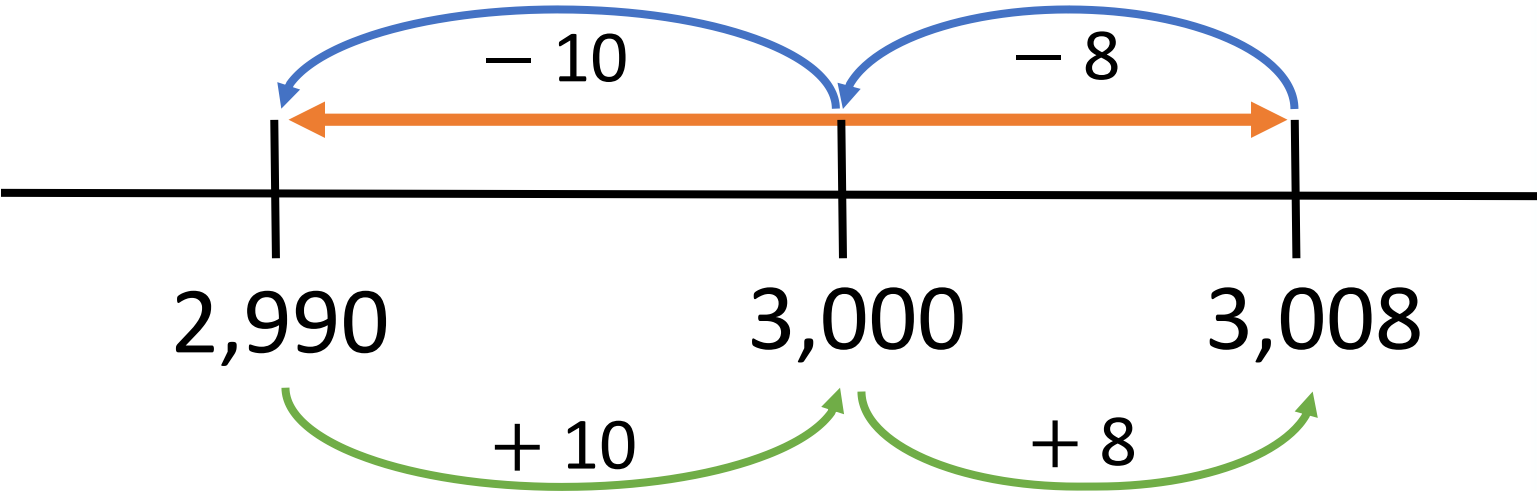
LET'S LEARN



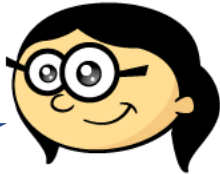
$$3,008 - 2,990 = 18$$

	Th	H	T	O
	² 3	⁹ 0	¹ 0	8
—	2	9	9	0
	0	0	1	8

$$3,008 - 2,990 = 18$$



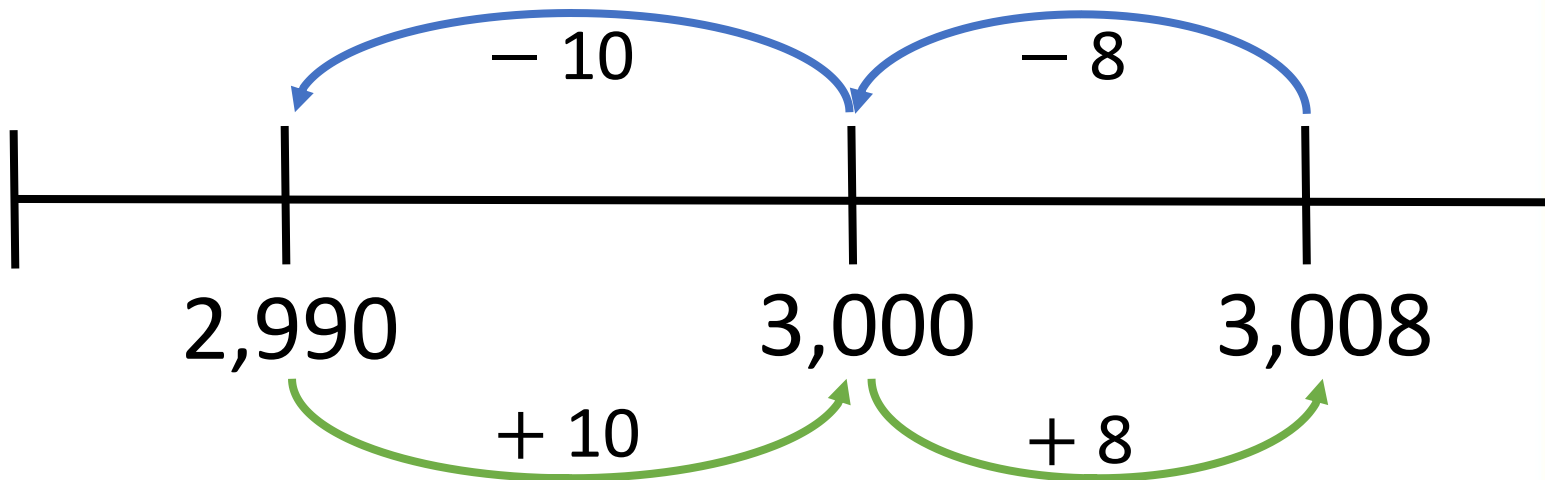
I think I could count on to find the difference.



$$3,008 - 2,990 = 18$$

“Producing the most good-quality work with little wasted effort”

Th	H	T	O
2	1 ⁹	1 ⁰	8
2	9	9	0
0	0	1	8



YOUR TURN

Have a go at questions
1 – 3 on the worksheet



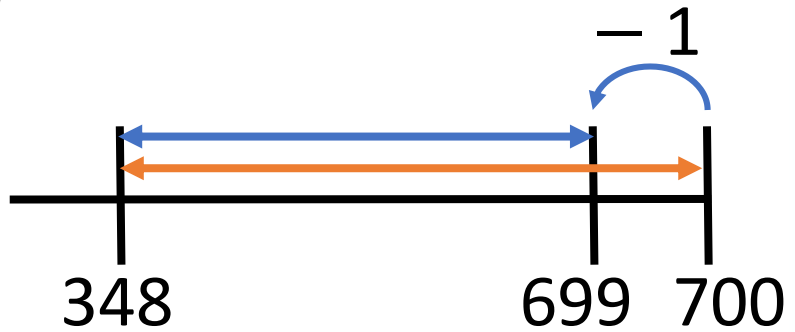
	H	T	O
	⁶ 7	⁹ 0	10
—	3	4	8
	3	5	2



	H	T	O
	6	1 ⁹	0 ¹⁰
—	3	4	8
	3	5	2



	H	T	O
	6	9	9
—	3	4	8
	3	5	1



$351 + 1 = 352$

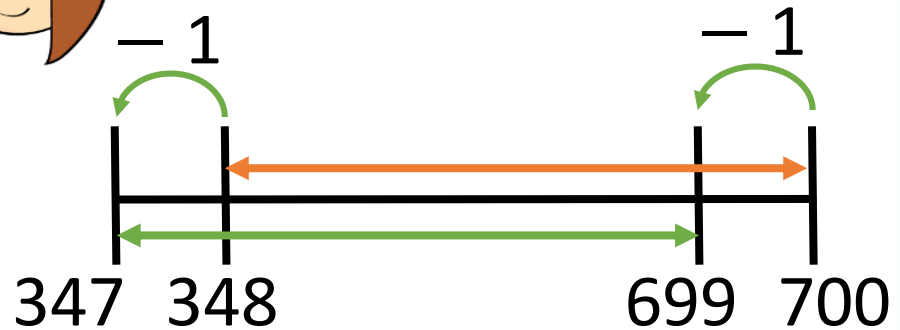
	H	T	O
	6	1 ⁹	0 ¹⁰
—	3	4	8
	3	5	2



	H	T	O
	6	9	9
—	3	4	7
	3	5	2



	H	T	O
	6	9	9
—	3	4	8
	3	5	1



$$351 + 1 = 352$$



Have a think

$$1) \quad 6,800 - 4,538 = 2,262$$
$$6,799 - 4,537$$

$$2) \quad 1,600 - 484 = 1,116$$
$$1,599 - 483$$

$$3) \quad 2,004 - 1,687 = 317$$
$$1,999 - 1,682$$

$$4) \quad 4,826 - 1,999 = 2,827$$
$$4,827 - 2,000$$

YOUR TURN

Have a go at the rest of
the worksheet

