

Key Vocabulary

Polar region

Arctic (North Pole)

Antarctic (South Pole)

Hemisphere – half the Earth divided by equator

Glacier – large mass of ice made by packed down snow

Habitat – environment to live and survive

Desert – region with very little rainfall

Adaptation – change/adjust

Carnivore – meat eater

Omnivore – meat and plant eater

Herbivore – plant eater

Climate – weather over a period of time

Season – time of the year

Survival – existence

Exploration – adventure/journey

Temperature – hotness/coldness

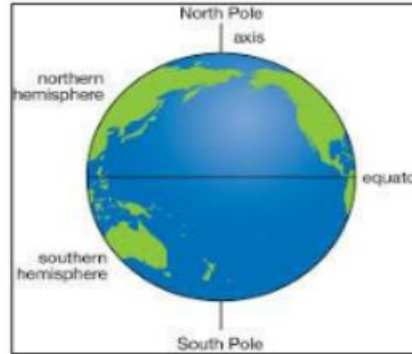
Ernest Shackleton – polar explorer

Robert Falcon Scott – polar explorer

Did you know...

Polar Bears and penguins do not live in the same pole.

Polar bears live in the North Pole (Arctic) and penguins live in the South Pole (Antarctic)



Where are the Polar Lands?

The polar regions are two snowy places at the top and the bottom of the earth. They are called the Arctic (North Pole) and Antarctica (South Pole). The hottest part of the Earth is called the Equator and this is in the middle.



PHYSICAL GEOGRAPHY

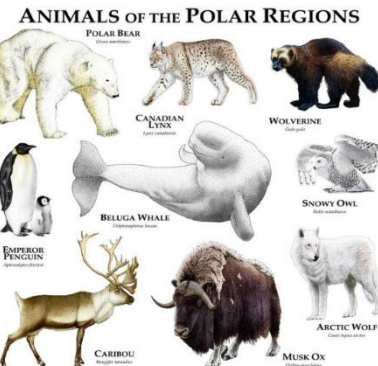
- Antarctica is the 5th largest continent based on size.
- No one lives there but scientists will stay there to conduct research.
- Antarctica has no countries.
- There are no major cities just scientific outposts.
- 98% of Antarctica is covered by ice.
- Antarctica is considered a desert because it experiences such little rain.
- Antarctica is quite mountainous.
- Antarctica is divided into three main parts: **East Antarctica** (the biggest part), **West Antarctica** and in between them the mountain range called the **Transantarctic Mountains**.

Can people live in the Poles?

Some people live in the Arctic, such as the Inuit people and some people visit and live in the Antarctic. As it is very cold, people need to wear thick warm clothing, which is sometimes made from animal fur. They live in houses and can sometimes build houses called igloos using blocks of ice.

How do people travel in the Polar lands?

As the land is covered in snow and ice for much of the year, some people use sledges pulled by husky dogs to travel around. However, snowmobiles are being used more nowadays as they can be faster.



What animals live in the Poles?

There are lots of animals in the polar regions and they have very thick fur so they don't get cold. Many of them have a layer of blubber underneath their fur to keep them warm too. Some of the animals are white in colour so that they are camouflaged against the snow.